

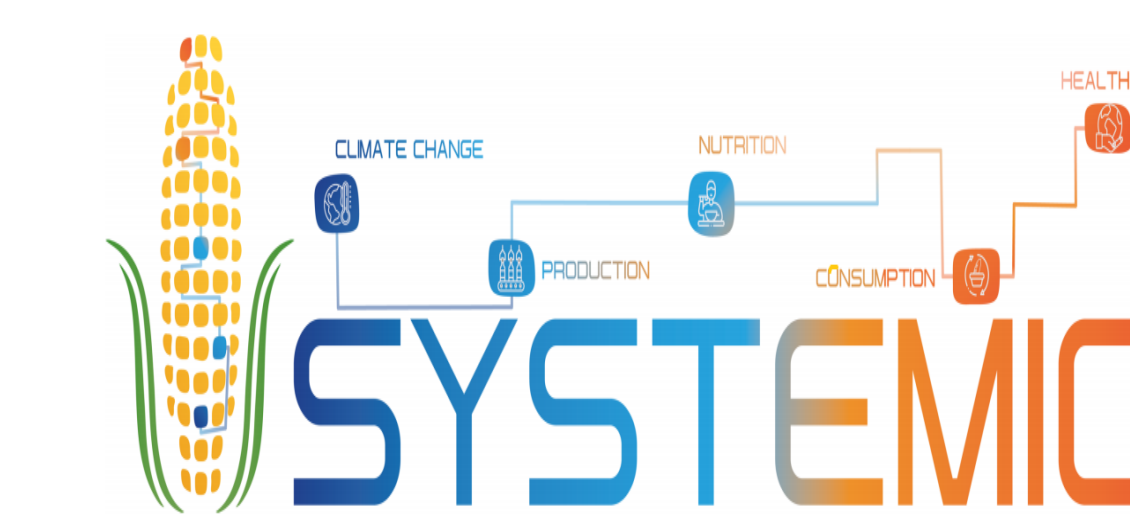
An integrated approach to the challenge of sustainable food systems: insights from the SYSTEMIC network

Dr. Habtamu Alem



habtamu.alem@nibio.no

@habtamu_alem

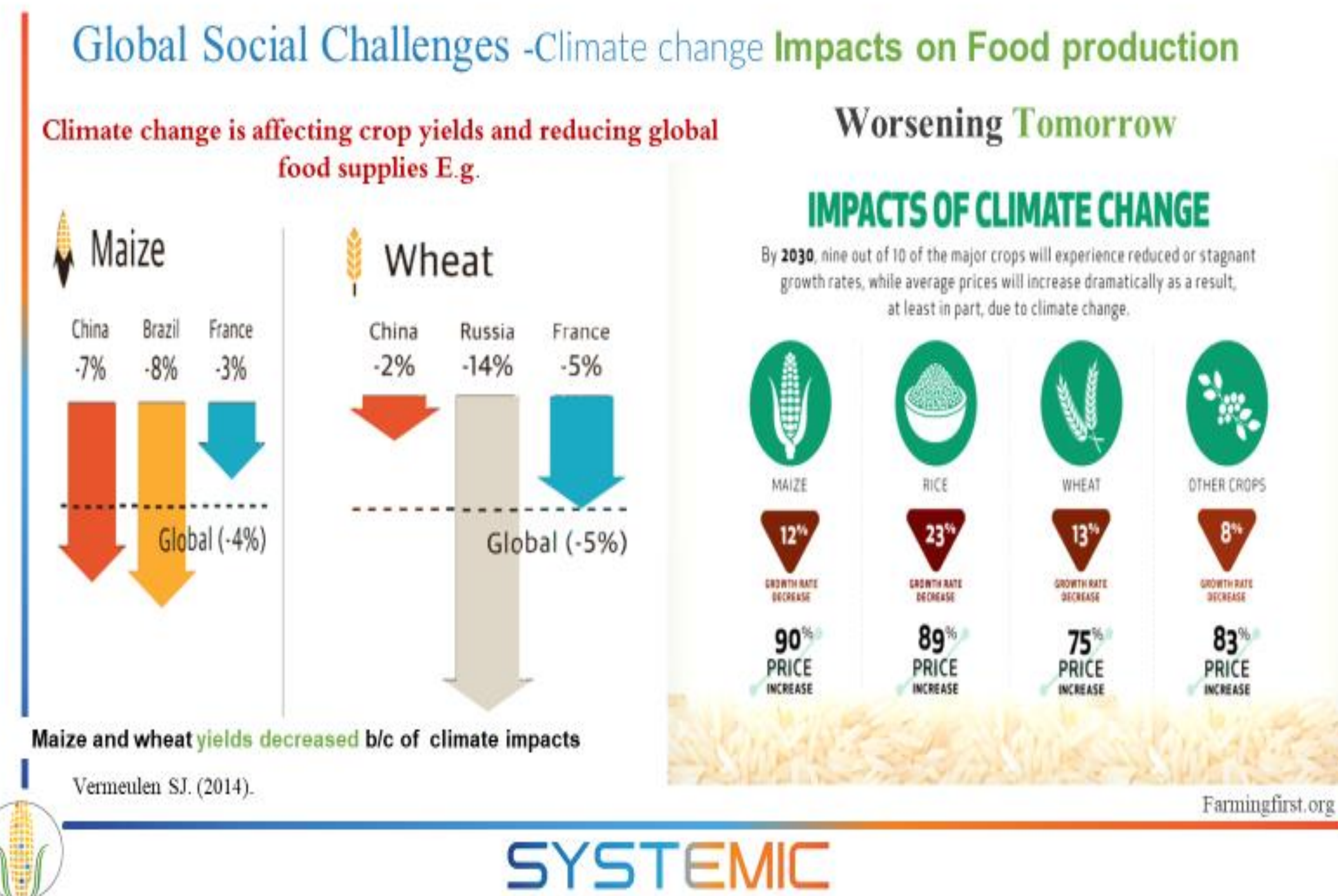


<http://systemic-hub.eu/>

Food system supply challenges

Securing **sufficient and healthy food** for all, while minimizing environmental impact is the great challenge we face already today.

Climate change is the main global challenge for the supply of **nutritious food** in the future.



Food system Demand challenges

Consumers are increasingly making dietary **choices** that do not align with **nutrition** and health guidelines.

Poor diet has become the leading global **risk factor** for death and disability (GBD, 2015).

Economic costs associated with **undernutrition** are estimated at US\$1-2 trillion per year, about 2-3% of global GDP (FAO, 2013).

The global economic cost of **obesity and associated** diet-related **diseases** is estimated at US\$2 trillion per year, about 2.8 % of global GDP (McKinsey, 2014).

Approach- SYSTEMIC

Food is a **system** and **complex** issue
All Challenges are supply and demand sides
All challenges are interrelated
Need for a holistic and systemic approach

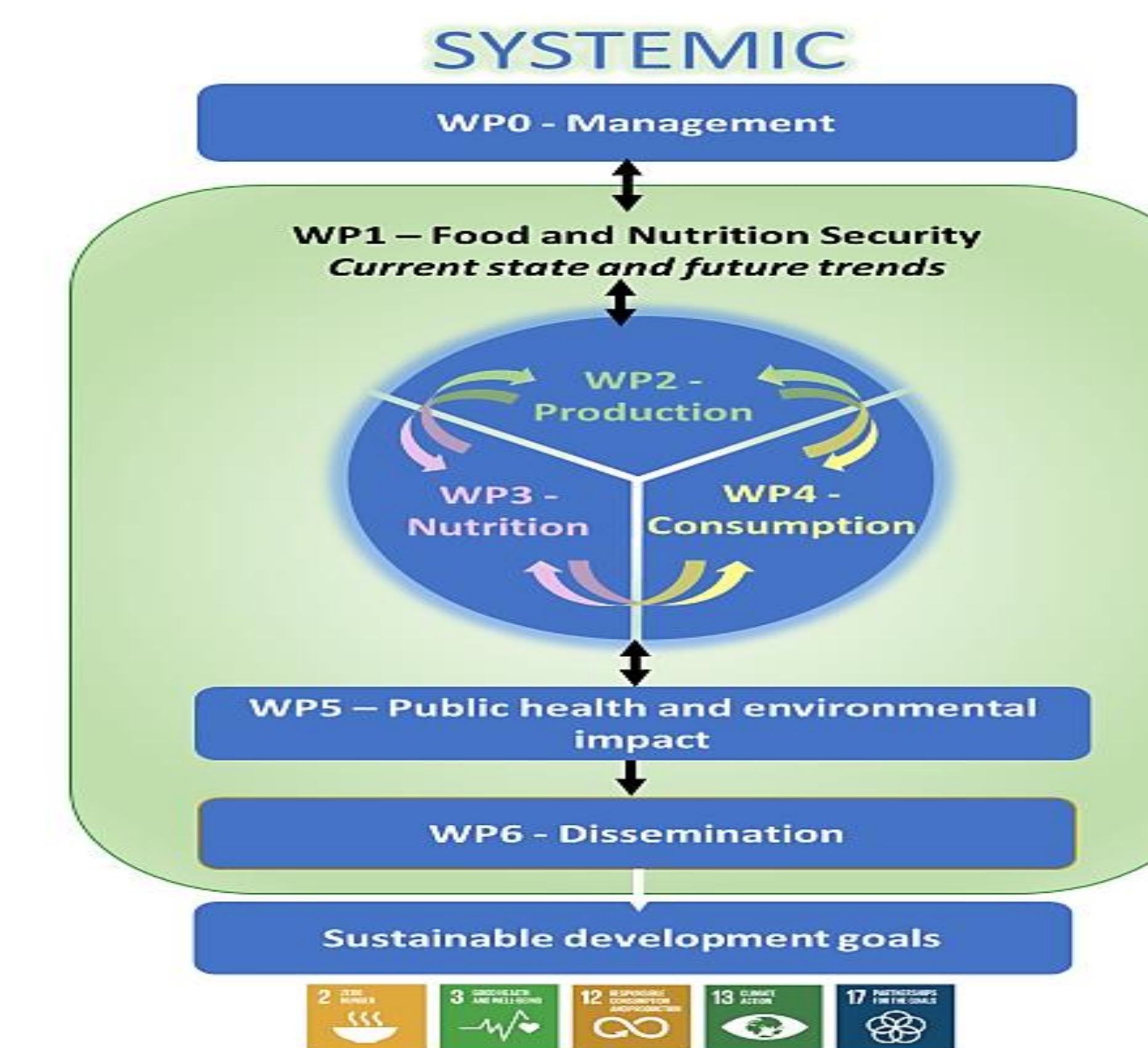


Figure 1. PERT Chart which shows the interdependencies of work packages (WP)

✓ SYSTEMIC envisions an integrated food system for ongoing sustainability in **production, consumption, and public health**

✓ Launched in 2019 under the ERA-HDHL

Funders